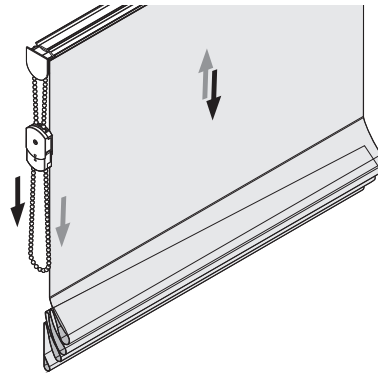


Operation

Closing or opening covering

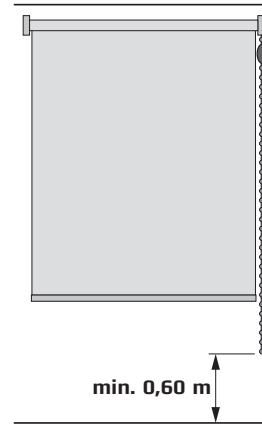
Installations with a chain mechanism are closed/opened by pulling on the front or rear chain.



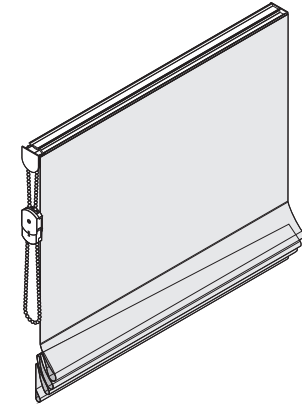
In the case of motor operation, follow the additional instructions.



Safety



Roman blind type RR31



Care

Thanks to a special manufacturing process, our fabrics have an antistatic finish, making them resistant to dust and dirt.

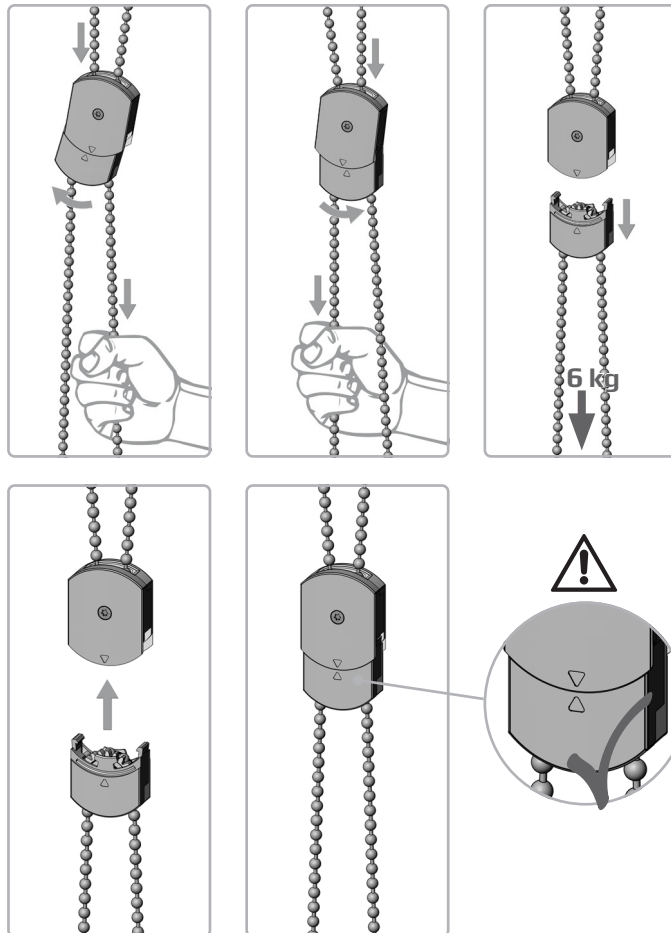
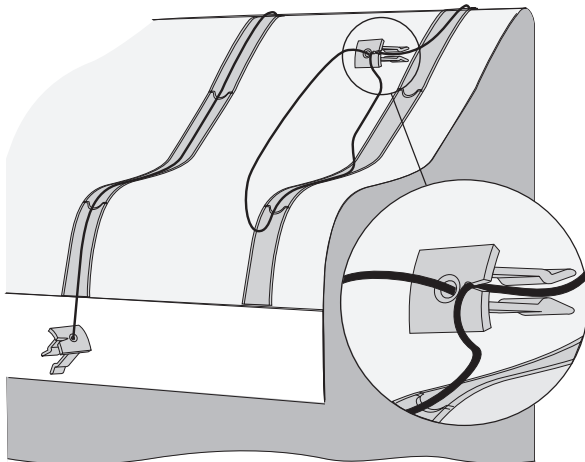
Occasional cleaning with a soft brush or feather duster will generally suffice.

Preparing fabric for washing

! Only for fabrics labelled as washable!
Follow washing instructions for fabric!

Follow the instructions for removing/attaching the panel of fabric on the next few pages.

Put the pull-cords round as shown and hook in with the groove in the cord clip at the top. This will prevent the cords from getting caught during washing. Alternatively, bundle the clips up and put them in a washing bag.



Installation - Operation - Care

Dear Customer,

this dimensionally accurate blind was produced especially according to your requirements. High quality materials and a design that is perfect in function and elegance guarantee a long service lifetime and thus ensure great pleasure in the purchased product.

Your blind Manufacturer



Please read this instructions carefully before fitting the blind.



Blinds must be fitted by skilled personnel. Wrong installation may result in accidents.

Alterations of the blind must be approved by the blind manufacturer.

No screws for fixing are enclosed. Always use appropriate screws and plugs suited for the wall or ceiling material where the blind is fitted!



WARNING



- Young children can strangle in the loop of pull cords, tapes and cords that operate window coverings. They can also wrap cords around their necks.
- To avoid strangulation and entanglement, keep cords out of reach of young children.
- Move beds, cots and furniture away from window covering cords.
- Do not tie cords together. Make sure cords do not twist and create a loop.
- Install and use the included safety devices according to the installation instructions on these device to reduce possibility of such an accident.

According to EN 13120



Clip mounting

Number of clips

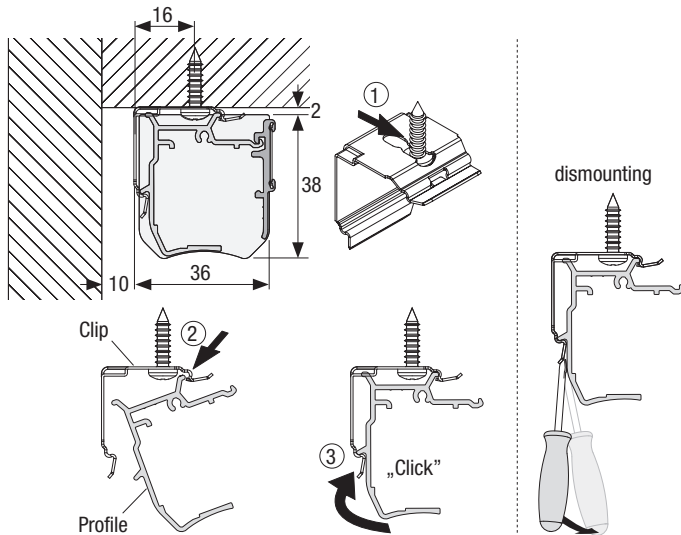
Width in mm	250–1199	1200–2399	2400–3000
	2	3	4

Recommendation for wood or plastic windows:
DIN 7981 Ø 3,9 x 16 mm
(On other materials depending on base.
Use plugs if necessary.)



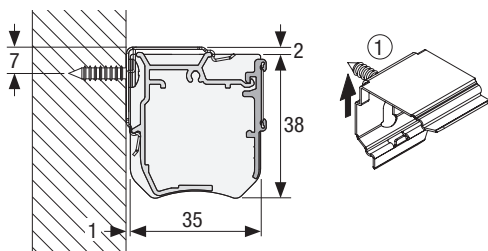
Ceiling mounting

In the case of ceiling mounting, the gap to the wall must be at least 10 mm. Position the screws in the oblong hole right at the front (1). Insert the profile in the clip diagonally with the lug at the top (2), then swivel it into the clip until it clicks into place (3).



Wall mounting

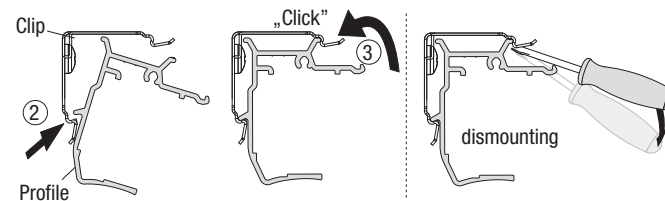
Position the screws in the oblong hole right at the top (1).



Clip mounting

Wall mounting 2

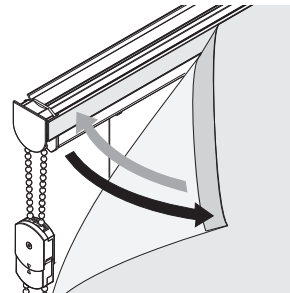
Insert the profile in the clip diagonally with the lug at the bottom (2), then swivel it into the clip until it clicks into place (3).



Removing/attaching panel of fabric

Removing/attaching fabric

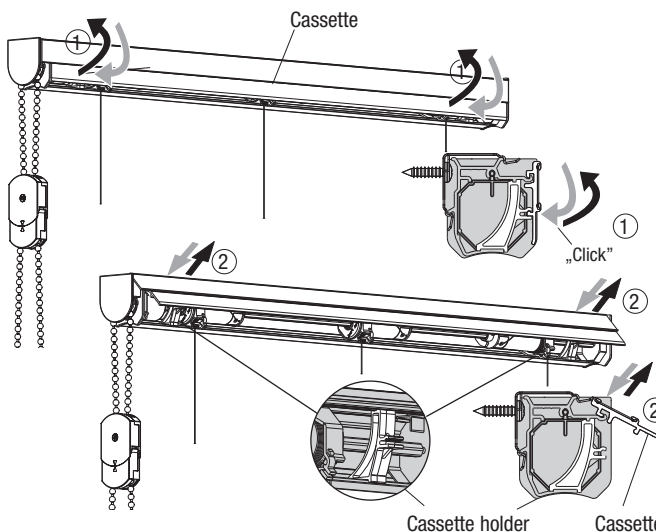
The fabric attaches to the hook profile on the cassette by means of loop tape. To remove, pull the fabric carefully to the side from above. To reattach the fabric, press the loop tape evenly onto the hook tape.



Removing/attaching cassette

To **remove** the cassette, pull it forwards off the cassette holder (1) and unhook from the profile at the top (2).

To **attach** the cassette, hook it diagonally into the groove in the profile at the top (2) and press onto the cassette holder until it clicks into place (1).



Removing/attaching panel of fabric

Removing/attaching pull-cords

Before removing the pull-cords, let the blind right down and remove the cassette. First take the pull-cords out of the cord guide (1), then pull the cord clip (2) out of the opening in the cone (3) with a gentle tug on the cord.

To **attach** the cord clip (2) for the pull-cords, press it into the opening in the cone (3) until it clicks into place (4). Press the pull-cords into the cord guide on the cone (1). Make sure that the cords hang vertically.

