

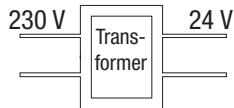
## Electrical Installation



**WARNING**



**Installation work in the 230 V range must only be carried out by authorised specialists.**



The motor may only be supplied by extra-low voltage safety power supplies.

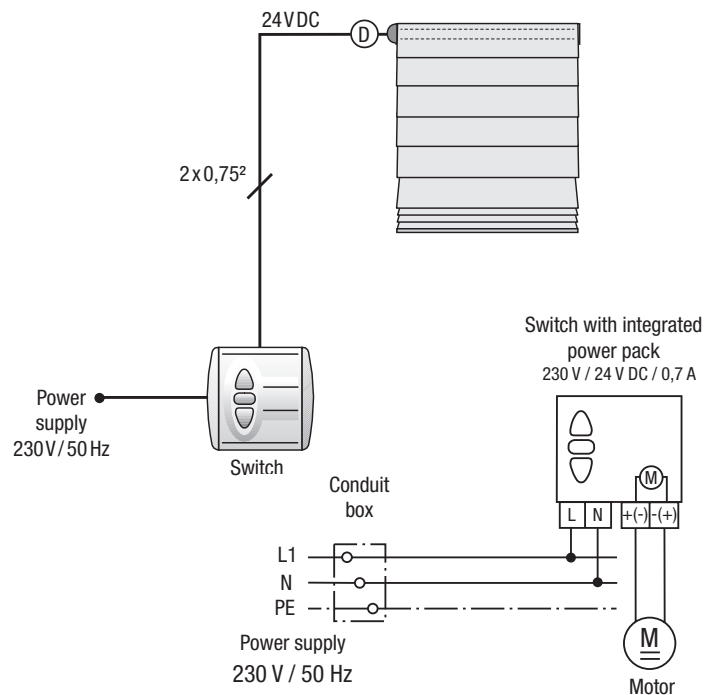
Detailed information you can get from your specialist dealer on inquiry.

## Maintenance

The motor system is maintenance-free.

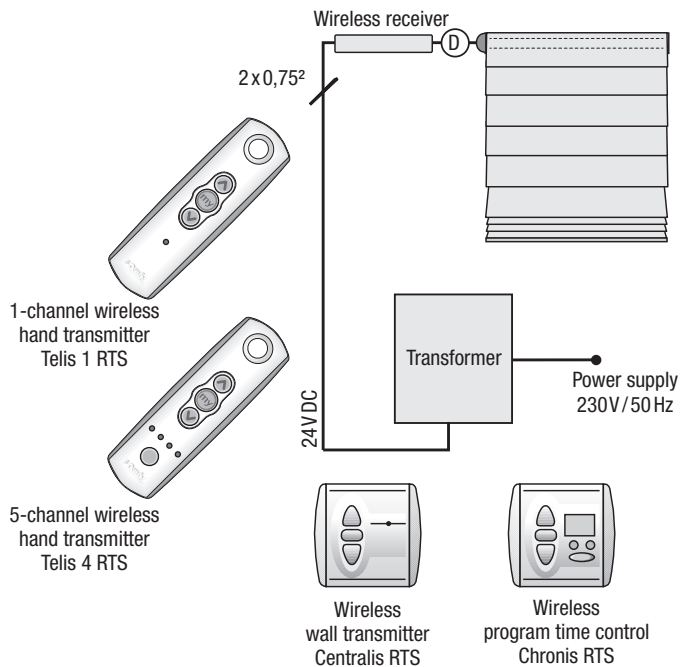
## Connecting example

**Single control with switch with integrated power pack**



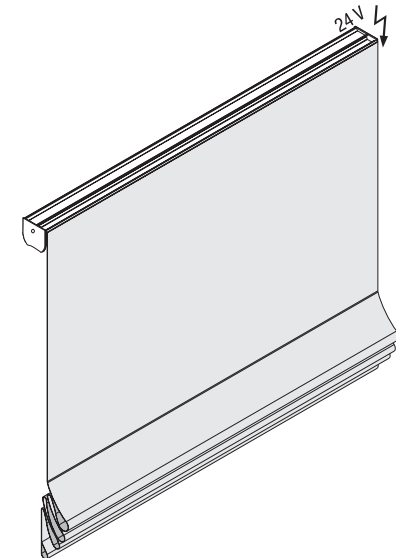
## Connecting example

**Single control with wireless wall transmitter or wireless hand transmitter**



## Electrical Installation

**Roman blind type RR36 (24 V Motor)**



**Dear Customer,**

With this motorised roman blind system you have chosen a system that offers innovation, high quality, and comfort, with remote control and switch/push button options available to guarantee your satisfaction system

**Your roman blind Manufacturer**



**Please read this instructions carefully before fitting the blind**



Installation work in the 230 V range must only be carried out by authorized specialist.

Wrong installation may result in accidents.

Alterations of the blind must be approved by the blind manufacturer.

Keep remote controls out of the reach of children!

## Installing the Roman blind

Install the RR36 Roman blind as described in "Installation - Operation - Care", Roman blind type RR31.

**Note:** As there are so many options for controlling and operating the Roman blind, please following the connection and operating instructions for the SOMFY components supplied.

## Adjusting stop position

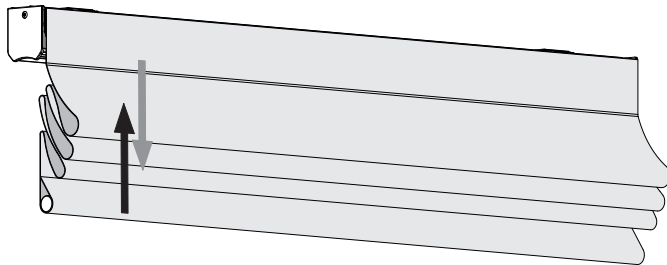
**!** Your Roman blind has been set up at the factory to switch off automatically in both bottom and top stop position. **!**

Please make sure that the polarity of the drive mechanism is correct or the following spindle lock adjustments (left/right) will be reversed!

Only correct stop position if necessary! Changing the stop position can have adverse effects and should therefore be done by a specialist!

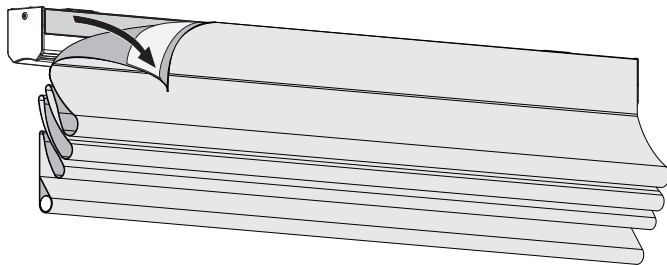
### Moving fabric stack to desired position

Move the fabric stack to the desired stop position (top or bottom, as required) by operating the switch or wireless remote control, then press the stop button.



### Detaching fabric stack from profile

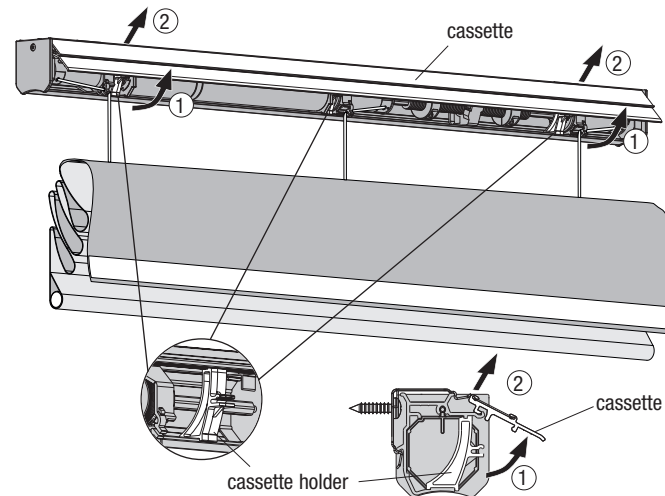
Detach the fabric stack by pulling the loop tape sideways off the hook profile.



## Adjusting stop position

### Removing cassette

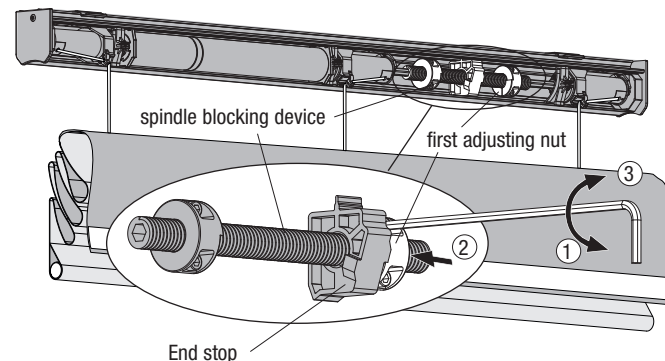
To remove the cassette, pull it forwards off the cassette holder (1) and unhook from the profile at the top (2).



### Adjusting top stop position

**NB:** For top stop position only change the position of the first adjusting nut, which is closer to the end stop. It may be on the left or right. The second adjusting nut is for bottom stop position.

Undo the Allen screws at the **first** adjusting nut (1) and slide the nut to the spindle lock's end stop (2). Tighten the screws back up (3).

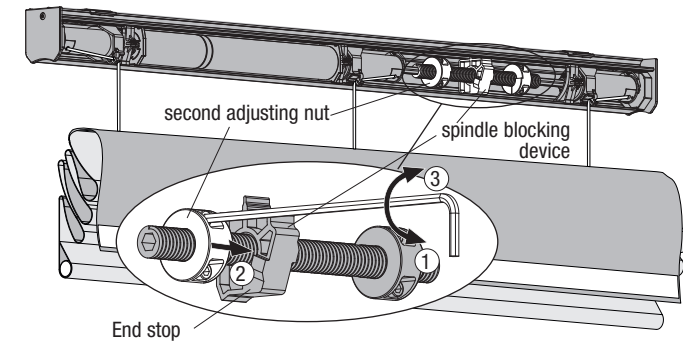


## Adjusting stop position

### Adjusting bottom stop position

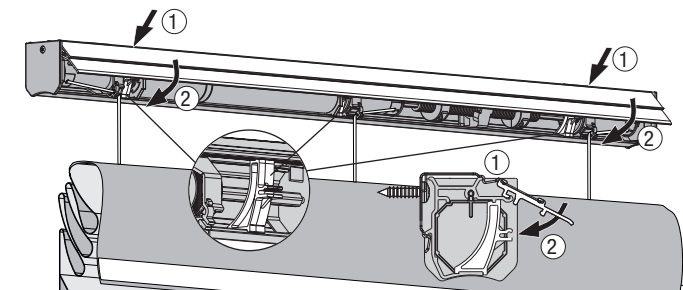
**NB:** For bottom stop position only change the position of the second adjusting nut! The first adjusting nut is for top stop position.

Undo the Allen screws at the second adjusting nut (1) and slide the nut to the spindle lock's end stop (2). Tighten the screws back up (3).



### Fitting cassette

To fit the cassette, place it on top of the profile (1) and press onto the cassette holder (2).



### Reattaching fabric stack

Reattach the fabric stack to the hook profile with the loop tape.

