

||| PANEL BLINDS



BENTHIN



PANEL BLINDS

Panel blinds are the perfect solution for large glass façades and banks of windows.

As a decorative privacy and sun screen or room divider with a discreet, clean appearance, panel blinds offer great flexibility for contemporary living areas and workspaces.

Benthin's panel blinds system provides modularity in outstanding quality.

Benthin's panel blinds system provides modularity in outstanding quality. Elegant profiles in a timeless design, reliable technology and perfect functionality combine to produce the ultimate in smooth-running systems in a discreet, harmonious look.

It is possible to create 2-, 3-, 4-, 5- and 6-track top rails with just two rail profiles.

Each of the traveller guide channels in the convenient top rails has an extra channel for the cord, ensuring maximum panel mobility.



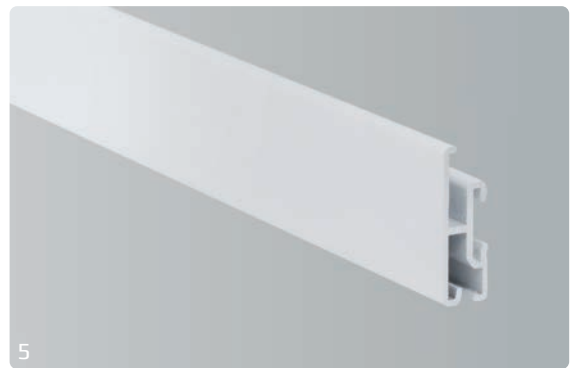
1



3



4



5



2



6

Combinable top rails [1]

A **2-track** and a **3-track profile** are easy to join in parallel using sturdy connectors.

Combining top rails also means that **both sides** are **decorative**.

Sturdy **connecting adapters** mean that there is practically no limit on the extendability of the top rails, and a **90° corner connector** is also available.

The traveller [2], which runs smoothly thanks to its large rollers, also comes in a swivel version for special variants.

A **traveller brake** that hooks onto the travellers can be used to fix individual panels quickly and adjustably, and to release them again with ease as required.

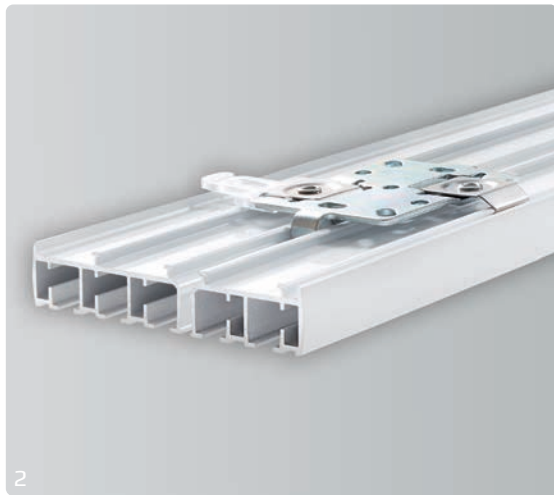
The top rails can be joined with **round connectors** so that the panels can be parked at the side.

The **panel suspension rail** [3] clicks into the traveller without the need for screws and extends into the top rail slightly to prevent chinks of light.

The panel is attached either by an **integrated velcro tape profile** [4] in the panel suspension rail or by an elegant **panel top rail** [5].

This enables fast and safe attachment of the material to a self adhesive spline or a plastic tube.

There is an elegant **closing profile** [6] to match that can be used with its flat or rounded side as a visible edging strip.



Simple, secure installation

Tried-and-tested clip technology makes fitting simple and secure.

Single top rails can be secured with the **standard clip** [1], while a **clip plate (double bracket)** [2] is used for combined profiles.

Alternatively the top rails can be screwed directly into place.

Two convenient **recess profiles** [3] allow concealed installation for all top rail variants.

A plastic clip fixing enables the 2- and 3-track rails to be installed effortlessly.

A combinable profile makes top rails with 4-6 tracks possible. The sturdy connectors are to all intents and purposes the top rail holders.

Aluminium end caps are available for the perfect finishing touch.

Control options

There is a variety of convenient ways to operate the panel blind system.

Maximum flexibility is offered by the **freely moveable** panels.

The design-oriented aluminium **wand** [4] and **cord operation** are the convenient control options.



The side and position of the cord operation can easily be changed even after installation.

Various carriers simply clip onto the panel top rail's end caps. This brings a great deal of flexibility to the carrier function and stack formation, ensuring a bespoke solution.

A transport lock provides reliable protection for the pre-assembled installation while in transit.

FV10/FV20 - Freely slidable

Panels can be moved individually by hand.

FV11/FV21 - Operating rod

Moving the drop with an elegant operating rod.

FV12/FV22 - Cord operation





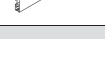
Moving the drop with a pull-cord.

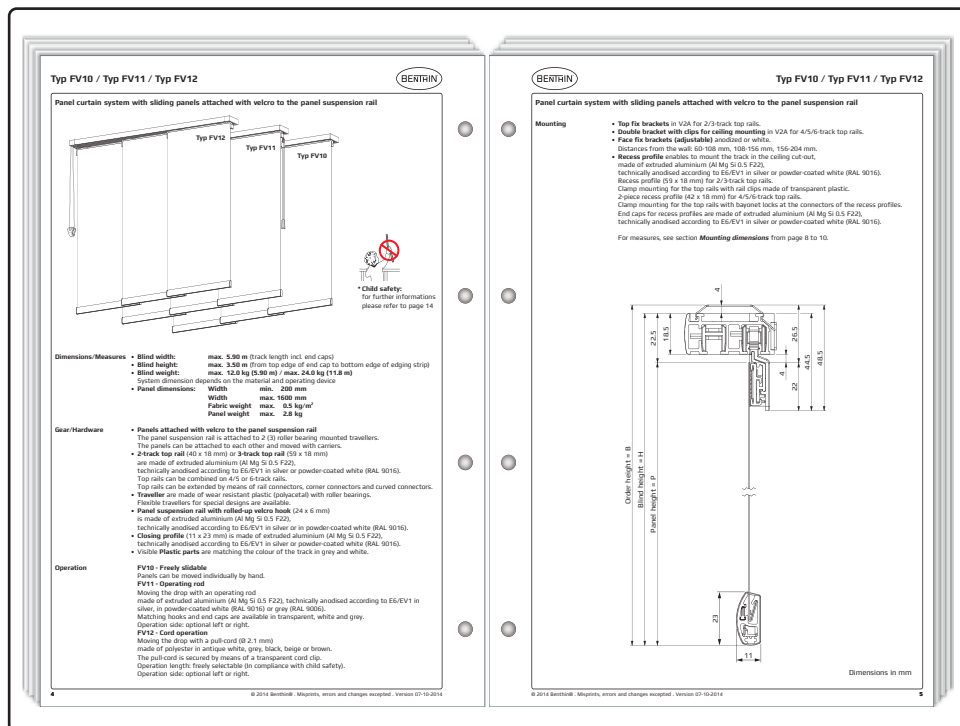
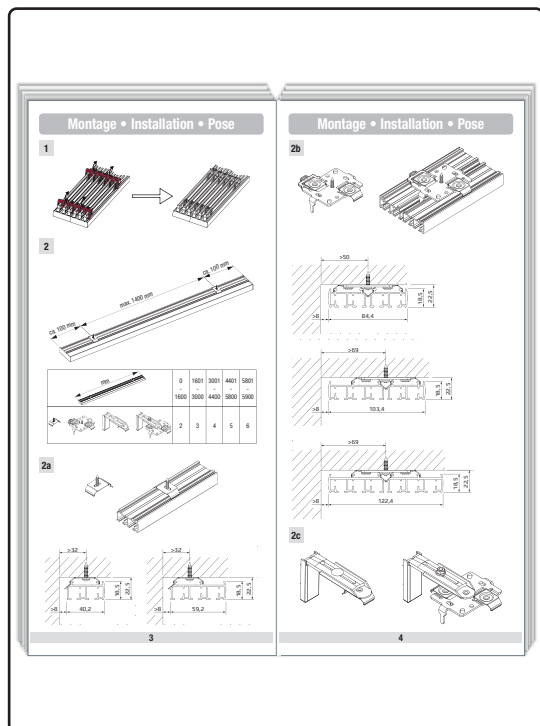
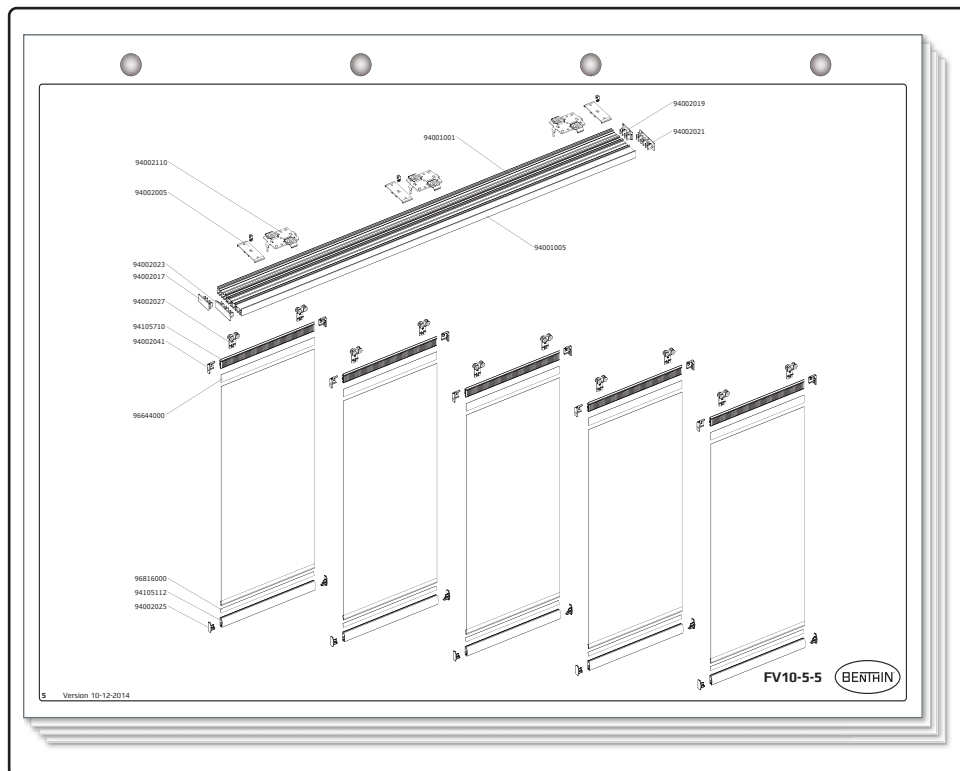
Dimensions/Measures

Blind width: max. 5.90 m
Blind height: max. 3.50 m
Blind weight: max. 12.0 kg

Panel dimensions: 200 - 1600 mm
Panel weight: max. 2.8 kg
Fabric weight: up to 0.5 kg/m²

* prolongable in depending of the control option.

Panel Blinds • Flächenvorhang • Panneaux japonais				
Tracks • Schienen • Rails	Part No. Art.-Nr. Ref. n°	Price - Meter Stück - Meter Prix - Mètre	Delivery Time Lieferzeit Délai de livraison	FV 01
Top rail 2 • Oberschiene 2 • Rail supérieur 2 / 40 x 16 mm				
white • weiß • blanc	94001001	48 m	A	
anodised • eloxiert • anodisé	94001000	48 m	A	
uncoated • unbeschichtet • non enduit	94001022	48 m	C	
white • weiß • blanc	94001003	48 m	A	
anodised • eloxiert • anodisé	94001002	48 m	A	
uncoated • unbeschichtet • non enduit	94001023	48 m	C	
2-track • 2-Stufig • 2 voies				
aluminium • Aluminium • aluminium				
Top rail 3 • Oberschiene 3 • Rail supérieur 3 / 50 x 18 mm				
white • weiß • blanc	94001005	24 m	A	
anodised • eloxiert • anodisé	94001004	24 m	A	
uncoated • unbeschichtet • non enduit	94001024	24 m	C	
white • weiß • blanc	94001007	24 m	A	
anodised • eloxiert • anodisé	94001006	24 m	A	
uncoated • unbeschichtet • non enduit	94001025	24 m	C	
3-track • 3-Stufig • 3 voies				
aluminium • Aluminium • aluminium				
Panel track with velcro tape (hook) • Paneelaufnahmeschiene mit Klettband (Haken) • Rail de fixation de panneau avec velcro (crochets) / 24 x 6 mm				
white • weiß • blanc	94105711	64 m	A	
anodised • eloxiert • anodisé	94105721	64 m	A	
aluminium • Aluminium • aluminium				
Panel track • Paneelaufnahmeschiene • Rail de fixation de panneau / 22 x 6 mm				
white • weiß • blanc	94001008	96 m	A	
anodised • eloxiert • anodisé	94001009	96 m	A	
uncoated • unbeschichtet • non enduit	94001026	96 m	C	
aluminium • Aluminium • aluminium				
Panel top rail • Paneeloberschiene • Rail supérieur de panneau / 26 x 9 mm				
white • weiß • blanc	94001010	96 m	A	
anodised • eloxiert • anodisé	94001011	96 m	A	
uncoated • unbeschichtet • non enduit	94001027	96 m	C	
aluminium • Aluminium • aluminium				



DOCUMENTATION FOR ALL NEEDS

Benthin provides a comprehensive range of documentary material to make it easy for you to get started with a product. Detailed in-depth reference documents enable our customers to build strong product knowledge on all models.

Component Catalogue

Lists all components with information about article numbers, delivery times and order quantities.

Additional exploded drawings with item numbers help with ordering and provide an overview.

Data sheets

Contain detailed information about each model. These may be used for general information purposes or when compiling order documents. They provide information for architects, as well as for manufacturers.

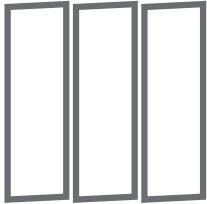
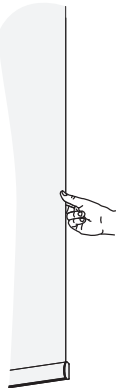
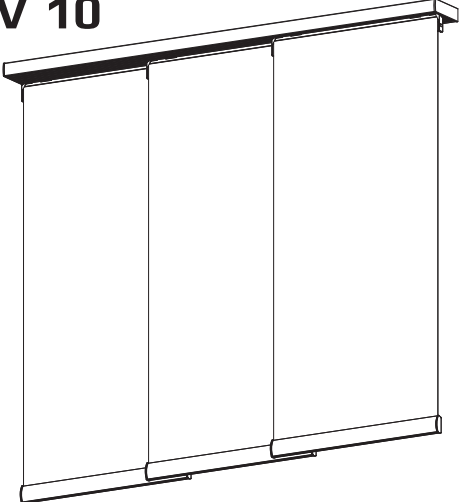
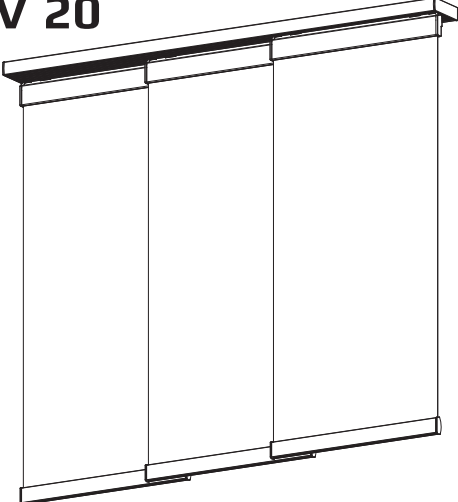

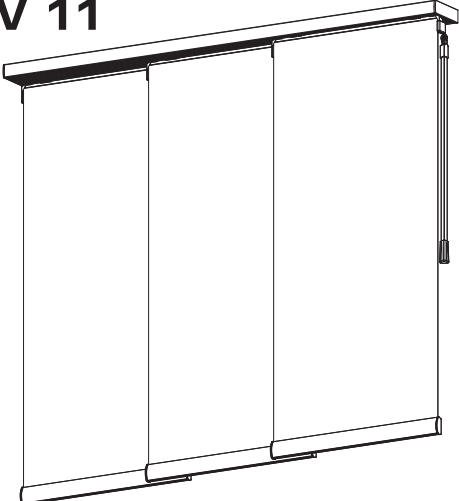


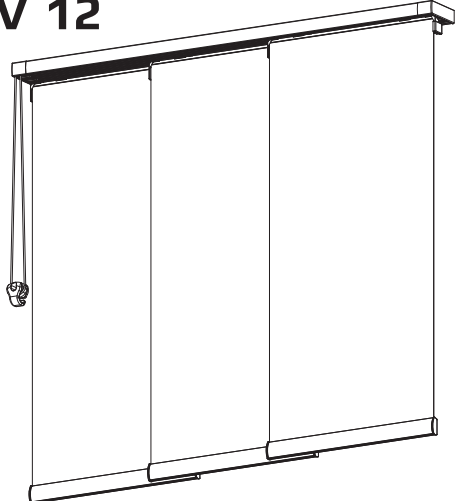
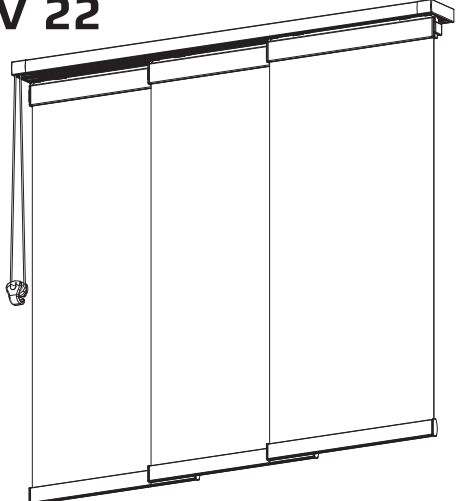
Installation instructions

A helpful guide describing, in words and pictures, how to install, operate and care for panel blinds.

Worksheet Program

A software tool to configure the models with bill of materials and 6 pricing.

TYPE OVERVIEW PANEL BLINDS

		Panel suspension system	
		Velcro profile	Panel top rail
Operation			
	Freely slidable		
		FV 10 	FV 20 
	Operating rod		
		FV 11 	FV 21 
	Pull-cord		
		FV 12 	FV 22 



Benthin GmbH
Osterstader Str. 16
D-27572 Bremerhaven
T +49 471 79 84 0
F +49 471 79 84 111
info@benthin.com

Benthin
11 Brookfield
Duncan Close
Moulton Park
Northampton
NN3 6WL
T +44 1604 490580
F +44 1604 648446
info-uk@benthin.com

Benthin Systèmes E.U.R.L
27, Avenue de Montboulon
FR-77165 St. Soupplets
T +33 1 60 61 56 56
F +33 1 60 01 57 11
info@benthin.fr